

GF10A

Ø38mm fixed type glass fitting AFFIX Glass Fitting

Technical features

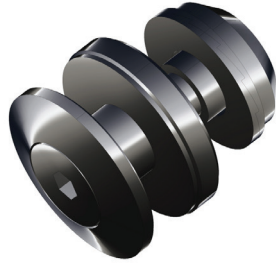
- Ø38mm x M10 Fixed Type
- Ø16mm Straight hole
- 316 Marine Grade Stainless Steel

Suitable for

- Balustrades upto 13.52mm thickness

Finish

- Brushed Satin Stainless #4 (SSS)
- Mirrored Polished Stainless#8 (PSS)



Standard interlay thickness of 1.52mm

Product Codes

AFX GF10A Suitable for 10T, 10TL, 12T, 12TL glass

Specify at time of order

Finish

GF10B

Ø50mm fixed type glass fitting AFFIX Glass Fitting

Technical features

- Ø50mm x M10 Fixed Type
- Ø20/ Ø30mm Countersink hole
- 316 Marine Grade Stainless Steel

Suitable for

- Frameless glass applications up to 21.52mm thickness
- NOT TO BE USED in overhead glazing and external balustrade applications

Finish

- Brushed Satin Stainless #4 (SSS)
- Mirrored Polished Stainless#8 (PSS)



Standard interlay thickness of 1.52mm

Product Codes

AFX GF10B-10 Suitable for 10T glass
AFX GF10B-12 Suitable for 12T glass
AFX GF10B-15 Suitable for 15T & 16TL glass
AFX GF10B-19 Suitable for 19T & 20TL glass

Specify at time of order

Glass Thickness
Finish

GF10C

Ø50mm fixed type glass fitting AFFIX Glass Fitting

Technical features

- Ø50mm x M10 Fixed Type
- Ø20 straight hole
- 316 Marine Grade Stainless Steel

Suitable for

- Frameless glass applications up to 21.52mm thickness

Finish

- Brushed Satin Stainless #4 (SSS)
- Mirrored Polished Stainless#8 (PSS)



Standard interlay thickness of 1.52mm

Product Codes

AFX GF10C-10 Suitable for 10T & 10TL glass
AFX GF10C-12 Suitable for 12T & 12 TL glass
AFX GF10C-15 Suitable for 15T & 16TL glass
AFX GF10C-19 Suitable for 19T & 20TL glass

Specify at time of order

Glass Thickness
Finish

GF10D

Ø50mm fixed type glass fitting AFFIX Glass Fitting

Technical features

- Ø50mm x M10 Articulated wType
- Ø28mm straight hole
- 316 Marine Grade Stainless Steel

Suitable for

- Frameless glass applications up to 21.52mm thickness
- NOT TO BE USED in overhead glazing and external balustrade applications

Finish

- Brushed Satin Stainless #4 (SSS)
- Mirrored Polished Stainless#8 (PSS)



Standard interlay thickness of 1.52mm

Product Codes

AFX GF10D Suitable for 10T glass
Suitable for 12T glass
Suitable for 15T & 16TL glass

Specify at time of order

Glass Thickness
Finish

GFR14A

Ø60mm articulated type CSK glass fitting

AFFIX Glass Fitting

Technical features

- Ø60mm x M14 Articulated Type
- Ø34/ Ø40mm Countersink hole
- 316 Marine Grade Stainless Steel

Suitable for

- Frameless glass applications up to 21.52mm thickness
- NOT TO BE USED in overhead glazing and external balustrade applications

Finish

- Brushed Satin Stainless #4 (SSS)
- Mirrored Polished Stainless#8 (PSS)

Standard interlay thickness of 1.52mm

Product Codes

AFX GF14A Suitable for 12T, 15T, 16TL, 19T, 20TL glass

Specify at time of order

Finish



GFR14B

Ø60mm articulated type glass fitting

AFFIX Glass Fitting

Technical features

- Ø60mm x M14 Articulated Type
- Ø32mm Straight hole
- 316 Marine Grade Stainless Steel

Suitable for

- Frameless glass applications up to 21.52mm thickness

Finish

- Brushed Satin Stainless #4 (SSS)
- Mirrored Polished Stainless#8 (PSS)

Standard interlay thickness of 1.52mm

Product Codes

AFX G14B Suitable for 10T, 10TL, 12T, 12TL, 15T, 16TL, 19T, 20TL glass

Specify at time of order

Finish



GFR14C

Ø60mm articulated type CSK glass fitting

AFFIX Glass Fitting

Technical features

- Ø60mm x M14 Articulated Type
- Ø34/ Ø40mm/ Ø36 mm Countersink hole

Suitable for

- Frameless glass applications up to 44mm thickness
- Designed for Multi-Laminate applications
- Designed for Insulated Glass Units/ Double Glazed Units
- NOT TO BE USED in overhead glazing and external balustrade applications

Finish

- Brushed Satin Stainless #4 (SSS)
- Mirror Polished Stainless #8 (PSS)

Product Codes

AFX GF14C Suitable for 12mm to 44mm thick glass

Compatible Accessories

Z-STR-162 12mm Air Space Donut
Z-STR-163 14mm Air Space Donut

Specify at time of order

Finish

Glass Makeup and thickness



GFR14D

Ø60mm articulated type glass fitting

AFFIX Glass Fitting

Technical features

- Ø60mm x M14 Articulated Type
- Ø32/ Ø36mm Countersink hole
- 316 Marine Grade Stainless Steel

Suitable for

- Frameless glass applications up to 44mm thickness
- Designed for Multi-Laminate applications
- Designed for Insulated Glass Units/ Double Glazed Units

Finish

- Brushed Satin Stainless #4 (SSS)
- Mirror Polished Stainless #8 (PSS)

Product Codes

AFX GF14D Suitable for 10mm to 44mm thick glass

Compatible Accessories

Z-STR-162 12mm Air Space Donut
Z-STR-163 14mm Air Space Donut

Specify at time of order

Finish

Glass Makeup and thickness

